

# INTERIOR DESIGN<sup>®</sup>

JUNE  
2018

*to the limit*



# HOSPITALITY hotshots

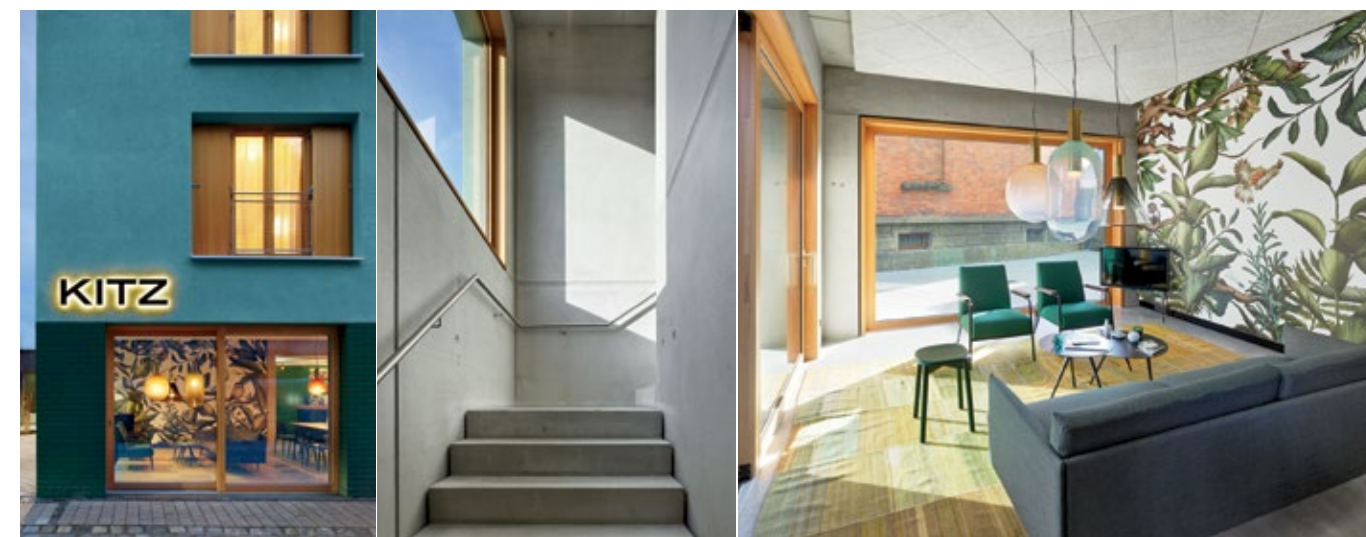
*The ground level of the hotel integrates newly painted bricks from an early 1900's apartment building nearby. ➤*

## *evergreen relationship*

*firm: krampulz meyer architekten  
project: kitz, metzingen, germany*







**After studying** at the University of Stuttgart in Germany, architects Benjamin Krampulz and Michael Meyer each formed their own firm. Six years later, they entered a design competition together and won, thus launching Krampulz Meyer Architekten. Since, the firm has completed the Kitz, a boutique hotel in Metzingen, the southwestern city known throughout Germany for its 70-plus clothing outlet stores.

The 12,000-square-foot property with just 23 guest rooms and suites was erected to serve the shoppers flooding the area every weekend as well as weekday business travelers (Hugo Boss is among the corporations headquartered in Metzingen). It's also the sister property of the Achtender, the client's other hotel with an antler logo that's located down the street. *Achtender* is the German



word for *stag*, and *kitz* is *fawn*; both monikers are a nod to the region's game-heavy culinary traditions. "But it's not literal," Krampulz explains. "It's about the colors and atmosphere," Meyer adds.

Witness the exterior of the Kitz, its emerald bricks and stucco meant to evoke the nearby forests. Inside, a lobby wall boasts foliage patterned wall covering, hunter-green tiles appoint the café, and rustic birch panels the suites. ➔

**Clockwise from top left:** Tinted stucco clads the upper three levels. Aluminum signage is custom. Prefabricated concrete lines the stairwell. Acoustical fabric wall covering decorates the lobby. Birch panels a suite. Michael Meyer and Benjamin Krampulz founded Krampulz Meyer Architekten before launching Meyer Architekten and Fesselet Krampulz Architectes.



CLOCKWISE FROM TOP: ROLAND HALBE; ESTHER THORENS; COURTESY OF MEYER ARCHITEKTEN

ROLAND HALBE





*Clockwise from top: Jean Prouvé armchairs furnish the café. Larch frames the corridor door to the suites. Glazed ceramic tiles a wall in the café. Similar tile appears in a guest bathroom.*

**FROM FRONT MUUTO:** SOFA (LOBBY). **HOCHBURG:** CUSTOM WALL COVERING. **BOHEMIA MACHINE:** ROUND PENDANT FIXTURES (LOBBY, CAFÉ). **DESIGNER CARPETS:** RUGS. **VITRA:** ARMCHAIRS (LOBBY, SUITE, CAFÉ), TILE (CAFÉ, BATHROOM). **HAY:** STOOLS (LOBBY, CAFÉ), CHAIRS (SUITE, CAFÉ). **MAIGRAU:** COCKTAIL TABLES (LOBBY, SUITE), TABLES (CAFÉ). **PECO LADENEINRICHTUNGEN:** CUSTOM PANELING (SUITE), CUSTOM BAR (CAFÉ), CUSTOM MIRROR (BATHROOM). **MANU-FACTUM:** PENDANT FIXTURES (HALL). **KARTELL:** SLENDER PENDANT FIXTURES (CAFÉ). **DURAVIT:** SINK (BATHROOM). **HANSGRÖHE:** SINK FITTINGS. **THROUGHOUT FINKDUO:** CUSTOM WINDOWS. **NEUFORM:** CUSTOM DOORS. **HERADESIGN:** CEILING SYSTEM. **RN ESTRICH:** FLOORING. **HOCHBURG DESIGN:** CUSTOM GRAPHICS. **WINFRIED WOHLLEB INGENIEURBÜRO FÜR BAUSTATIK:** STRUCTURAL ENGINEER, CIVIL ENGINEER. **INGENIEURBÜRO RATH:** MEP. **STEFAN KÖHLER:** WOODWORK. **KREATIVER METALLBAU:** METALWORK. **MÜLLERSCHÖN BAU:** GENERAL CONTRACTOR.



## HOSPITALITY hotshots

After the Kitz, Krampulz and Meyer dissolved the firm to work separately again. But the change has to do with geography—Krampulz has moved to Vevey, Switzerland, and established Fesselet Krampulz Architectes, while Meyer, still in Stuttgart, has launched Meyer Architekten—rather than creative differences. In fact, the two are currently collaborating on a friend's home back in Metzingen.

—Athena Waligore



FROM TOP: PETER MUNTANION; ROLAND HALBE (3)